

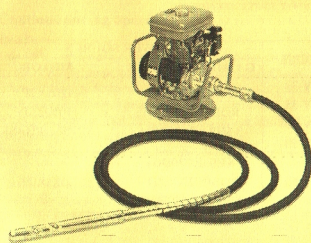


## KORMAX CORPORATION

Room No., 301-1 Keumsung Bldg., #245-18 Jangn-1Dong,  
Dongdaemoon-Ku, Seoul, Korea  
Tel: +82-2-2247-9163 Fax: +82-2-2248-5063  
E-mail: kimc@unitel.co.kr  
hjc615@chollian.net

# CONCRETE VIBRATOR MANUAL

“KV” SERIES  
(REINFORCED BANDAGE HOSE TYPE)



KORMAX CORPORATION

**KORMAX**

LIGHT CONSTRUCTION EQUIPMENTS

## HOW TO OPERATE AND MAINTAIN

Our "KV" series concrete vibrators designed of pendulum type which changes the revolution of power source (motor or engine) to the percussion vibration of 3 to 4 times more than the number of the revolution of power source. The power source can be used at low speed of about 3000 R.P.M.

Our "KV" series are designed to be set with "KVM" motor (Single phase induction), or "KME" gasoline engine set. Please pay your attention to the revolution of engine not to exceed 3,600RPM to avoid any trouble of vibrator.

## A. SELECTION OF POWER SOURCE

Please find suitable model of vibrator which can be matched with each power source as follows:

MODEL	POWER SOURCE	
	GASOLINE ENGINE	MOTOR
KV-32	KE(DE 1800DG)	1HP x 2P
KV-38	ROBIN(EY-20D)	110V-220V
KV-45	3.5HP x 3600RPM	SINGLE PHASE
KV-50		
KV-60	KE(DE 270DG)	2HP x 2P
	ROBIN(EY-28D)	
	5.5HP x 3600RPM	

**KORMAX**

LIGHT CONSTRUCTION EQUIPMENTS

## B. OPERATION

### a. Connection & disconnection of flexible shaft and power source.

It can be easily connected and disconnected by turning the setting tool of power source to the right direction. Please pay your more attention not to touch the soil and sand which cause the trouble of smooth connection and disconnection to the connecting part.

### b. Starting

when the vibrator does not generate vibration properly despite operation of power source, please tap the cap lightly. Then, proper vibration can be achieved.

## C. Cautions during operation

### a. Head

Our "KV" series are designed to generate percussion vibration by the repulsive movement of rotary shaft inside of head. When oil leakage happens inside of head, the rotary shaft will not make repulsive movement generating vibration. When filth, mortar, dust, dirt, and so on, attach inside of head, the similar trouble may be caused. Please pay attention not to allow the oil to enter the head.

### b. Flexible hose

Please pay attention not to bend flexible hose severely. Long operation under the severely bent condition will shorten the life time of flexible hose. If the heavy weight is dropped on the hose or the car is run over the hose, the spiral tube inside hose will be dent and even new one can not be operated.

**KORMAX**

LIGHT CONSTRUCTION EQUIPMENTS

## D. Maintenance

The following maintenance should be performed periodically.

### a. Head

When the vibration becomes improperly, please remove cap from housing, and make clean the inside of cap, housing and rotary shaft with clean tissue of cloth wetted by solvent or equivalent.

### b. Flexible shaft

Please wipe off old grease with clean tissue or cloth and put new one at every 400 hours operation.

## E. How to remove

### left -hand thread

- cap & case
- case & hose joint case
- Hose joint case & shaft joint

### right- hand thread

- counter shaft joint & shaft joint
- shaft joint & shaft joint Key.

Please do not confuse right & left -hand thread during assembly and disassembly.

To disassemble the vibrator, Please take following steps.

(a) Remove hose joint case (5) from hose joint coupling (14)

(b) Remove shaft joint (17) from counter shaft (13)

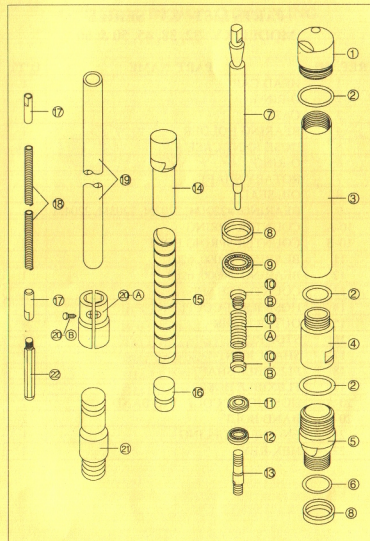
(c) Remove further parts.

(d) To lubricate or repair flexible shaft, please take the procedure (a) and (b),

- then pull flexible shaft out of flexible hose to the power source,
- clear out grease adhering on the flexible shaft,
- coat with new grease and put flexible shaft into the side of the power source.

**KORMAX**

LIGHT CONSTRUCTION EQUIPMENTS





**KORMAX**

LIGHT CONSTRUCTION EQUIPMENTS

### PARTS LIST "KV" SERIES

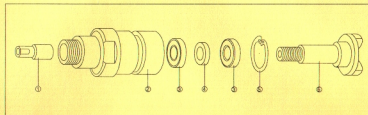
MODEL:KV -32, 38, 45, 50 & 60

REF. NO.	PART NAME	Q'TY
1	HEAD CAP	1
2	O-RING	3
3	CASE	1
4	BEARING HOLDER	1
5	HOSE JOINT CASE	1
6	O-RING	1
7	ROTARY SHAFT	1
8	OIL SEAL	1
9	BEARING #2201M, 2202M, 2203M, 2204M	1
10-A	COUNTER SPRING	1
10-B	COUNTER SPRING BOLT	2
11	BEARING #6000, 6203	1
12	BEARING #6000, 6203	1
13	COUNTER SHAFT	1
14	HOSE JOINT COUPLING	1
15	OUTER LINER	1
16	STOP RING	1
17	SHAFT JOINT	2
18	FLEXIBLE SHAFT	1
19	FLEXIBLE HOSE	1
20-A	HOSE JOINT COUPLING BAND	1
20-B	BAND BOLT	2
21	ENGINE COUPLING	1
22	HEX-KEY	1

**KORMAX**

LIGHT CONSTRUCTION EQUIPMENTS

### OPTIONAL DYNAPAC COUPLING



### PARTS LIST

NO.	DESCRIPTION	Q'TY
1	HEXAGONAL SCREW CAP	1
2	HOSE CONNECTOR	1
3	BALL BEARING (6004)	2
4	SPACER RING	1
5	SHAP RING	1
6	SHAFT COUPLING	1